

Anti human COUP-TF I mouse monoclonal antibody

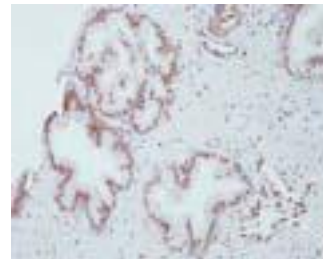
COUP-TF I: Chicken ovalbumin upstream promoter-transcription factor I

Code No	PP-H8132-00 old No. 2ZH8132H
Clone No.	H8132
Lot.	A-2
Concentration	1 mg/mL
Volume	100 uL
Ig Class	G2a
Description	Chicken ovalbumin upstream promoter transcription factor I (COUP-TFI, EAR3, COUP-TFA; NR2F1) is a member of orphan nuclear receptor. COUP-TF I is expressed in specific regions of the rostral brain, in stripes in the presumptive hindbrain. COUP-TFI has varied roles in the development of the peripheral nervous system, such as early regionalization of the neocortex, differentiation of subplate neurons and guidance of thalamocortical axons. COUP-TFs were shown to interact with a number of other nuclear receptors.
Nomenclature	NR2F1
Genbank	X12795
Origin	Produced in BALB/c mouse ascites after inoculation with hybridoma of mouse myeloma cells (NS-1) and spleen cells derived from a BALB/c mouse immunized with Baculovirus-expressed recombinant human COUP-TF I (6-81 aa).
Specificity	This antibody specifically recognizes human COUP-TF I and cross reacts with mouse and rat COUP-TF I. This antibody does not recognize human COUP-TF II and EAR2.
Purification	Ammonium sulfate fractionation
Formulation	Physiological saline with 0.1% NaN ₃ as a preservative.

Application / Recommended Concentration

In order to obtain the best results, optimal working dilutions should be determined by each individual user.

Western Blot	1 ug/mL
Non reducing Western Blot	Not yet tested
ELISA	0.1 ug/mL
Immunoprecipitation	Decide by use
Supershift Assay	Not yet tested
Chromatin immunoprecipitation	Not yet tested
Immunohistochemistry	10-50 ug/mL



Human
Prostate gland
paraffin section



Rat
Cerebrum
paraffin section

Storage Store at 2 - 8 °C up to one month. For long-term storage, the solution may be frozen in working aliquots. Repeated freezing and thawing is not recommended. Storage in a frost-free freezer is not recommended.

Reference Suh JM, *et al.* Mol Endocrinol. 2006; 20(12): 3412-20
 Qin J, *et al.* Dev Dyn. 2007; 236(3): 810-20
 Perilhou A, *et al.* Mol Cell Biol. 2008; 28(14): 4588-97

Notes Sodium azide may react with lead and copper plumbing to form explosive metal azides. Flush with large amounts of water during disposal.

FOR RESEARCH ONLY. NOT FOR USE IN HUMANS.

Not for Diagnostic or Therapeutic use. Purchase of this product does not include or carry any right to resell or transfer this product either as a stand-alone product or as a component of another product. Any use of this product other than the permitted use without the express written consent of Perseus Proteomics Inc. is prohibited.

MADE IN JAPAN

Jul 6, 2011