

## Anti human HNF4 alpha mouse monoclonal antibody

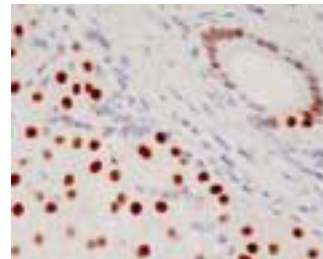
Hepatocyte nuclear factor 4 alpha

<b>Code No</b>	PP-H1415-00 old No. 2ZH1415H
<b>Clone No.</b>	H1415
<b>Lot.</b>	A-2
<b>Concentration</b>	1 mg/mL
<b>Volume</b>	100 uL
<b>Ig Class</b>	G2a
<b>Description</b>	Hepatocyte nuclear factor 4 alpha (HNF4, HNF4a; NR2A1) is a member of orphan nuclear receptor. HNF4a is expressed in the liver, kidney, intestine and pancreas. Mutation of HNF4a in humans has been associated with maturity-onset diabetes of the young type 1 (MODY1). HNF4 binds to DNA as an exclusive homodimer. The HNF4a gene is alternatively spliced and may generate up to nine different isoforms, HNF4a1 through HNF4a9.
<b>Nomenclature</b>	NR2A1
<b>Genbank</b>	X87871
<b>Origin</b>	Produced in BALB/c mouse ascites after inoculation with hybridoma of mouse myeloma cells (NS-1) and spleen cells derived from a BALB/c mouse immunized with Baculovirus-expressed recombinant human HNF4 alpha (393-461 aa)
<b>Specificity</b>	This antibody specifically recognizes human HNF4 alpha 1, 2, 4, 5, 7, 8 and cross reacts with mouse and rat HNF4 alpha 1, 2, 4, 5, 7, 8.
<b>Purification</b>	Ammonium sulfate fractionation
<b>Formulation</b>	Physiological saline with 0.1% NaN <sub>3</sub> as a preservative.

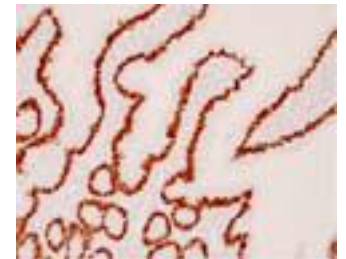
### Application / Recommended Concentration

In order to obtain the best results, optimal working dilutions should be determined by each individual user.

<b>Western Blot</b>	1 ug/mL
<b>Non reducing Western Blot</b>	Decide by use
<b>ELISA</b>	0.3 ug/mL
<b>Immunoprecipitation</b>	Decide by use
<b>Supershift Assay</b>	2ng/assay
<b>Chromatin immunoprecipitation</b>	Decide by use
<b>Immunohistochemistry</b>	10-20 ug/mL



Human Liver  
Hepatocyte  
Paraffin section



Human  
intestinum tenue

**Storage** Store at 2 - 8 °C up to one month. For long-term storage, the solution may be frozen in working aliquots. Repeated freezing and thawing is not recommended. Storage in a frost-free freezer is not recommended.

**Reference** Tanaka T, *et al.* J. Pathol. 208, 662-672, 2006

**Notes** Sodium azide may react with lead and copper plumbing to form explosive metal azides. Flush with large amounts of water during disposal.

FOR RESEARCH ONLY. NOT FOR USE IN HUMANS.

Not for Diagnostic or Therapeutic use. Purchase of this product does not include or carry any right to resell or transfer this product either as a stand-alone product or as a component of another product. Any use of this product other than the permitted use without the express written consent of Perseus Proteomics Inc. is prohibited.

**MADE IN JAPAN**

Aug 23, 2006