

## Anti human PR common mouse monoclonal antibody

PR common: Progesterone Receptor

**Code No** PP-A9621A-00

**Clone No.** A9621A

**Lot.** A-1

**Concentration** 1 mg/mL

**Volume** 100 uL

**Ig Class** G1

**Description** Progesterone receptor (PR; NR3C3) is a member of steroid receptor (GR, AR, MR, ER). PR binds progesterone. PR is expressed in uterus, ovary, vagina, fallopian tubes and breast. PR plays a central role in diverse reproductive events associated with establishment and maintenance of pregnancy, alveolar development in the breast, and sexual behavior. Two isoforms of this receptor have been identified, PR-A and PR-B, 94 and 114 kDa in size, respectively.

**Nomenclature** NR3C3

**Genbank** M15716

**Origin** Produced in BALB/c mouse ascites after inoculation with hybridoma of mouse myeloma cells (NS-1) and spleen cells derived from a BALB/c mouse immunized with Baculovirus-expressed recombinant human PR isoform A (166-263 aa) .

**Specificity** This antibody specifically recognizes human PR isoform A and B, and cross reacts with mouse and rat PR isoform A and B.

**Purification** Ammonium sulfate fractionation

**Formulation** Physiological saline with 0.1% NaN<sub>3</sub> as a preservative.

### Application / Recommended Concentration

In order to obtain the best results, optimal working dilutions should be determined by each individual user.

**Western Blot** 1 ug/mL

**Non reducing Western Blot** 1 ug/mL

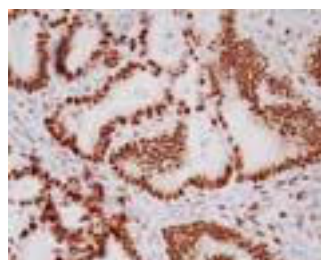
**ELISA** 10 ng/mL (A492=1.0)

**Immunoprecipitation** Decide by use

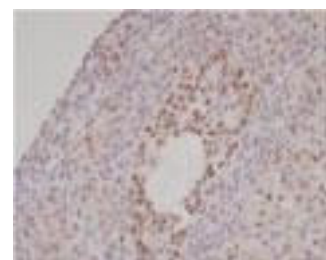
**Supershift Assay** Not yet tested

**Chromatin immunoprecipitation** Not yet tested

**Immunohistochemistry** 10-20 ug/mL



Human  
Endometrial cancer  
paraffin section



Rat  
Ovary  
paraffin section

**Storage** Store at 2 - 8 °C up to one month. For long-term storage, the solution may be frozen in working aliquots. Repeated freezing and thawing is not recommended. Storage in a frost-free freezer is not recommended.

### Reference

**Notes** Sodium azide may react with lead and copper plumbing to form explosive metal azides. Flush with large amounts of water during disposal.

FOR RESEARCH ONLY. NOT FOR USE IN HUMANS.

Not for Diagnostic or Therapeutic use. Purchase of this product does not include or carry any right to resell or transfer this product either as a stand-alone product or as a component of another product. Any use of this product other than the permitted use without the express written consent of Perseus Proteomics Inc. is prohibited.

**MADE IN JAPAN**

July 1, 2023

## Anti human PR common mouse monoclonal antibody

PR common: Progesterone Receptor

**Code No** PP-A9621A-00

**Clone No.** A9621A

**Lot.** A-2

**Concentration** 1 mg/mL

**Volume** 100 uL

**Ig Class** G1

**Description** Progesterone receptor (PR; NR3C3) is a member of steroid receptor (GR, AR, MR, ER). PR binds progesterone. PR is expressed in uterus, ovary, vagina, fallopian tubes and breast. PR plays a central role in diverse reproductive events associated with establishment and maintenance of pregnancy, alveolar development in the breast, and sexual behavior. Two isoforms of this receptor have been identified, PR-A and PR-B, 94 and 114 kDa in size, respectively.

**Nomenclature** NR3C3

**Genbank** M15716

**Origin** Produced in BALB/c mouse ascites after inoculation with hybridoma of mouse myeloma cells (NS-1) and spleen cells derived from a BALB/c mouse immunized with Baculovirus-expressed recombinant human PR isoform A (166-263 aa) .

**Specificity** This antibody specifically recognizes human PR isoform A and B, and cross reacts with mouse and rat PR isoform A and B.

**Purification** Ammonium sulfate fractionation

**Formulation** Physiological saline with 0.1% NaN<sub>3</sub> as a preservative.

### Application / Recommended Concentration

In order to obtain the best results, optimal working dilutions should be determined by each individual user.

**Western Blot** 1 ug/mL

**Non reducing Western Blot** 1 ug/mL

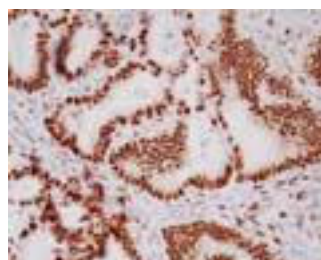
**ELISA** 10 ng/mL (A492=1.0)

**Immunoprecipitation** Decide by use

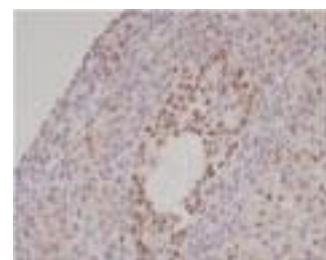
**Supershift Assay** Not yet tested

**Chromatin immunoprecipitation** Not yet tested

**Immunohistochemistry** 10-20 ug/mL



Human  
Endometrial cancer  
paraffin section



Rat  
Ovary  
paraffin section

**Storage** Store at 2 - 8 °C up to one month. For long-term storage, the solution may be frozen in working aliquots. Repeated freezing and thawing is not recommended. Storage in a frost-free freezer is not recommended.

### Reference

**Notes** Sodium azide may react with lead and copper plumbing to form explosive metal azides. Flush with large amounts of water during disposal.

FOR RESEARCH ONLY. NOT FOR USE IN HUMANS.

Not for Diagnostic or Therapeutic use. Purchase of this product does not include or carry any right to resell or transfer this product either as a stand-alone product or as a component of another product. Any use of this product other than the permitted use without the express written consent of Perseus Proteomics Inc. is prohibited.

**MADE IN JAPAN**

July 1, 2023