

Anti DM1 mouse monoclonal antibody

Maytansinoid DM1

Code No	PP-AB12204-0R
Clone No.	AB12204
Lot.	B-1
Concentration	1 mg/mL
Volume	100 µL
Ig Class	G1
Description	Maytansinoid DM1 is a potent cytotoxic agent used as a payload in antibody-drug conjugates (ADCs) for targeted cancer therapy. It is conjugated to monoclonal antibodies, enabling selective delivery to cancer cells, where it exerts its toxic effects to induce cell death. The high potency of DM1 makes it an effective component in ADC-based cancer treatments.
Genbank	
Origin	CHO recombinant antibody stable expression strain.
Epitope	
Specificity	This antibody reacts specifically with DM1.
Purification	Affinity chromatography with Protein A
Formulation	DPBS with 0.1% NaN ₃ as a preservative.

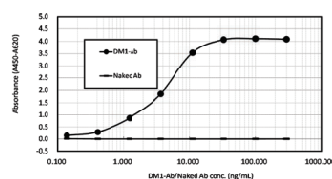
Application / Recommended Concentration

In order to obtain the best results, optimal working dilutions should be determined by each individual user.

Western Blot Not yet tested

Non reducing Western Blot Not yet tested

ELISA Immobilize the Anti-DM-1 Antibody at 2.5 µg/mL



Details on the next page.

Immunoprecipitation Not yet tested

Supershift Assay Not yet tested

Chromatin immunoprecipitation Not yet tested

Immunohistochemistry Not yet tested

Storage Store at 2 - 8 °C up to one month. For long-term storage, the solution may be frozen in working aliquots. Repeated freezing and thawing is not recommended. Storage in a frost-free freezer is not recommended.

Reference

Notes Sodium azide may react with lead and copper plumbing to form explosive metal azides. Flush with large amounts of water during disposal.

FOR RESEARCH ONLY. NOT FOR USE IN HUMANS.

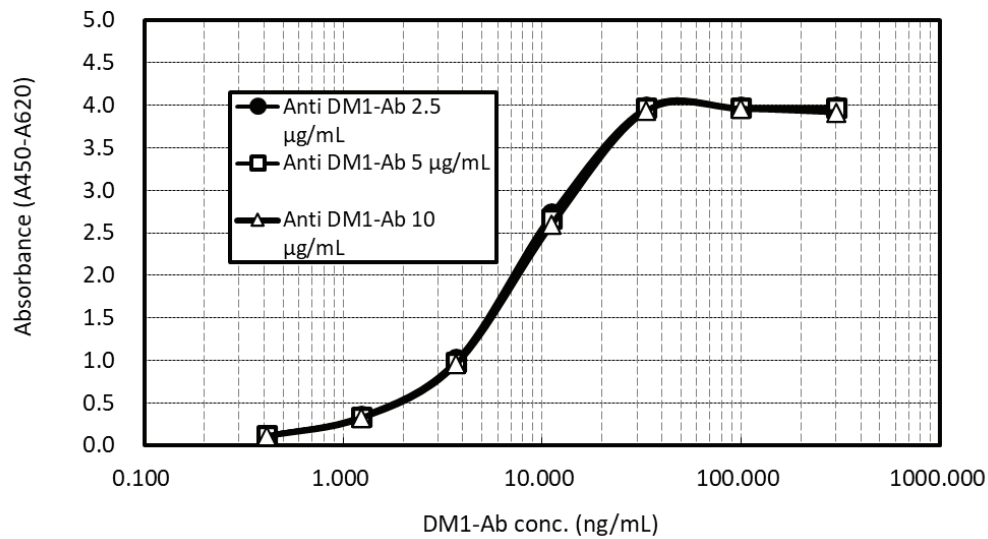
Not for Diagnostic or Therapeutic use. Purchase of this product does not include or carry any right to resell or transfer this product either as a stand-alone product or as a component of another product. Any use of this product other than the permitted use without the express written consent of Perseus Proteomics Inc. is prohibited.

MADE IN JAPAN
May 23, 2025

DATA

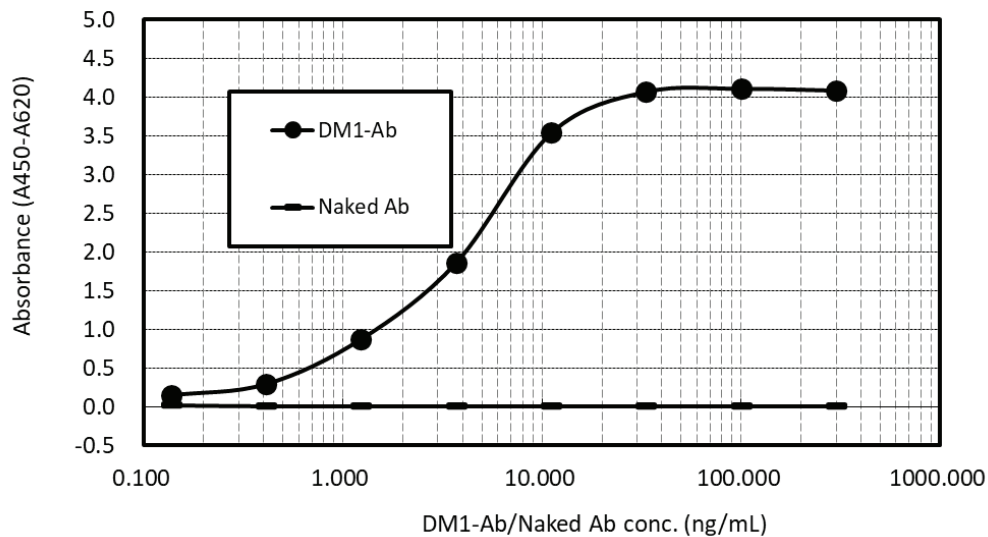
Anti-DM1 Antibody Bridging ELISA

1. Anti-DM1 Coating conc. Difference



Immobilize the Anti-DM1 Antibody (PP-AB12204-0R) at 2.5 µg/mL, 5.0 µg/mL and 10.0 µg/mL. Add DM1-Ab diluted, and then add HRP-conjugated Anti-Human IgG. Detection was performed using an HRP-based immunoassay.

2. Comparison between DM1-Ab and Naked Ab



Immobilize the Anti-DM1 Antibody (PP-AB12204-0R) at 2.5 µg/mL. Add DM1-Ab or Naked Ab diluted with 50% mouse plasma, and then add HRP-conjugated Anti-Human IgG. Detection was performed using an HRP-based immunoassay.

Limit of Detection*1: 0.14 ng/mL

Range of Quantification*2: 0.41-11.1 ng/mL

*1 Limit of Detection: Mean of the blank + 2 *standard deviation.

*2 Range of Quantification is applied using ULOQ (Upper Limit of Quantification) and LLOQ (Lower Limit of Quantification). The ULOQ is the highest concentration with a back-calculated value of 80%-120% and a coefficient of variation (CV) of less than 30%. The LLOQ is the lowest concentration with a back-calculated value of 75%-125% and a CV of less than 30%.