

## Anti human LXR alpha Ligand Binding Domain mouse monoclonal antibody

LXR alpha: Liver X Receptor alpha

**Code No** PP-PPZ0412-00

**Clone No.** PPZ0412

**Lot.** A-2

**Concentration** 1 mg/mL

**Volume** 100 uL

**Ig Class** G2a

**Description** Liver X receptor alpha (LXRα, RLD-1; NR1H3) is a member of orphan nuclear receptor. LXRα activator is the naturally occurring compound 22(R)-hydroxycholesterol (22(R)-HC), 20(S)HC, 24-HC, 25-HC, 7a-HC. LXRα is expressed in the liver, kidney and spleen. LXRα has important role in regulating cholesterol metabolism. It is believed that LXR specific agonist may have important medical applications in the regulation of cholesterol homeostasis. LXRα forms heterodimer with RXR.

**Nomenclature** NR1H3

**Genbank** U22662

**Origin** Produced in BALB/c mouse ascites after inoculation with hybridoma of mouse myeloma cells (NS-1) and spleen cells derived from a BALB/c mouse immunized with E.coli-expressed recombinant human LXR alpha (164-447 aa).

**Specificity** This antibody specifically recognizes human LXR alpha and cross reacts with mouse and rat LXR alpha. This antibody does not recognize human LXR beta.

**Purification** Ammonium sulfate fractionation

**Formulation** Physiological saline with 0.1% NaN<sub>3</sub> as a preservative.

### Application / Recommended Concentration

In order to obtain the best results, optimal working dilutions should be determined by each individual user.

**Western Blot** 1 ug/mL

**Non reducing Western Blot** Not yet tested

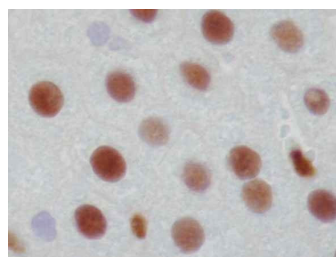
**ELISA** 0.2 ug/mL

**Immunoprecipitation** Decide by use

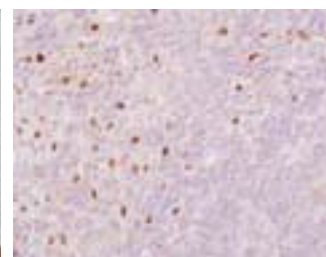
**Supershift Assay** Decide by use

**Chromatin immunoprecipitation** Decide by use

**Immunohistochemistry** 20-40 ug/mL



Rat Liver  
Hepatocyte, Kupffer cell  
paraffin section



Rat Spleen  
Macrophage  
paraffin section

**Storage** Store at 2 - 8 °C up to one month. For long-term storage, the solution may be frozen in working aliquots. Repeated freezing and thawing is not recommended. Storage in a frost-free freezer is not recommended.

**Reference** Blaschke F, *et al.*, Circ Res. 2004; 10;95(12): e110-23.  
Watanabe Y, *et al.*, Arterioscler Thromb Vasc Biol. 2005; 25(3):622-7  
Sakamoto A, *et al.*, J Histochem Cytochem. 2007; 55(6): 641-9

**Notes** Sodium azide may react with lead and copper plumbing to form explosive metal azides. Flush with large amounts of water during disposal.

FOR RESEARCH ONLY. NOT FOR USE IN HUMANS.

Not for Diagnostic or Therapeutic use. Purchase of this product does not include or carry any right to resell or transfer this product either as a stand-alone product or as a component of another product. Any use of this product other than the permitted use without the express written consent of Perseus Proteomics Inc. is prohibited.

**MADE IN JAPAN**

July 1, 2023