



Perseus Proteomics Inc.
4-7-6, Komaba, Meguro-ku, Tokyo 153-0041 Japan
TEL: +81-3-5738-1705 FAX: +81-3-3481-5760
<https://www.ppmx.com> info@ppmx.com

Certificate of Analysis

**PRODUCT: Anti human Sal-like protein 1(SALL1)
mouse monoclonal antibody**

CATALOG: PP-K9814-00

LOT #: A-3

Concentration: 1 mg/ml

Amount: 100 micro gram

Volume: 100 micro L

Buffer: Physiological saline with 0.1% NaN₃ as a preservative

Antigen: human SALL1 (258-499 a.a.) expressed on baculovirus

Isotype: Mouse G2a

Purification Method: Ammonium sulfate fractionation

Tested Applications: Western Blot, Immunoprecipitation,
Immunohistochemistry

Storage conditions: Store at +4°C short term (1-4 weeks),
at -20°C or less long term.

Stable for 12months at -20°C

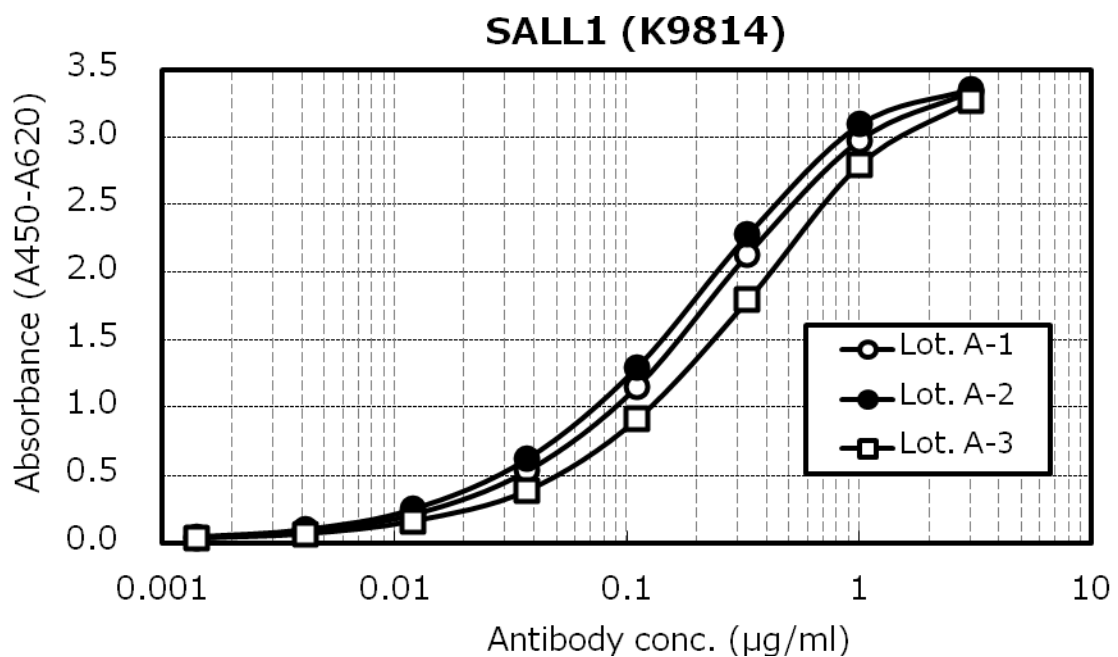
Avoid freeze / thaw cycle.

*Optimal dilutions should be determined by each laboratory for each application.
Intended for Research Use Only. Not for use in Diagnostic Procedures.*

Validation Data

Method: Each 1micro gram per well of antigen was coated on an ELISA plate for overnight at 4 . Blocking with non-fat dry milk incubated for one hour at room temperature. After washing plate, Serial diluted antibody solution was loaded on each well at room temperature. Washed Plate was incubated with HRP conjugated anti-mouse IgG (Amersham, 1:15,000), then washed and visualized with TMB reagent.

Result: Lot A-3 is evaluated as the same reactivity with old Lot A-1 and Lot A-2.



antibody conc. (ng/ml)	n = 2		
	Lot No.		
	A-1	A-2	A-3
1	0.039	0.044	0.036
4	0.091	0.099	0.068
12	0.214	0.250	0.163
37	0.535	0.622	0.388
111	1.158	1.300	0.916
333	2.137	2.281	1.797
1000	2.979	3.098	2.797
3000	3.336	3.360	3.270