

Anti human PR isoform B mouse monoclonal antibody

PR isoform B: Progesterone Receptor isoform B

Code No PP-H5344-00

Clone No. H5344

Lot. A-1

Concentration 1 mg/mL

Volume 100 uL

Ig Class G2a

Description Progesterone receptor (PR; NR3C3) is a member of steroid receptor (GR, AR, MR, ER). PR binds progesterone. PR is expressed in uterus, ovary, vagina, fallopian tubes and breast. PR plays a central role in diverse reproductive events associated with establishment and maintenance of pregnancy, alveolar development in the breast, and sexual behavior. Two isoforms of this receptor have been identified, PR-A and PR-B, 94 and 114 kDa in size, respectively. PR was shown that PR-A and PR-B isoforms can form homodimers as well as heterodimers.

Nomenclature NR3C3

Genbank M15716

Origin Produced in BALB/c mouse ascites after inoculation with hybridoma of mouse myeloma cells (NS-1) and spleen cells derived from a BALB/c mouse immunized with Baculovirus-expressed recombinant human PR isoform B (2-99 aa) .

Specificity This antibody specifically recognizes human PR isoform B and cross reacts with mouse and rat PR isoform B. This antibody does not recognize human PR isoform A.

Purification Ammonium sulfate fractionation

Formulation Physiological saline with 0.1% NaN₃ as a preservative.

Application / Recommended Concentration

In order to obtain the best results, optimal working dilutions should be determined by each individual user.

Western Blot 1 ug/mL

Non reducing Western Blot 3 ug/mL

ELISA 0.3 ug/mL (A450=0.5)

Immunoprecipitation Decide by use

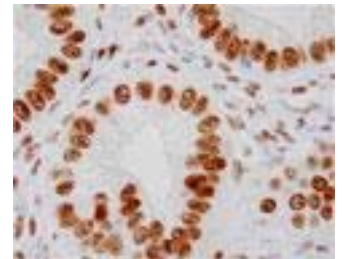
Supershift Assay Not yet tested

Chromatin immunoprecipitation Not yet tested

Immunohistochemistry 10-20 ug/mL



Human Uterus
Endometrial epithelial cell
paraffin section



Human Uterus
Endometrial epithelial cell
paraffin section

Storage Store at 2 - 8 °C up to one month. For long-term storage, the solution may be frozen in working aliquots. Repeated freezing and thawing is not recommended. Storage in a frost-free freezer is not recommended.

Reference

Notes Sodium azide may react with lead and copper plumbing to form explosive metal azides. Flush with large amounts of water during disposal.

FOR RESEARCH ONLY. NOT FOR USE IN HUMANS.

Not for Diagnostic or Therapeutic use. Purchase of this product does not include or carry any right to resell or transfer this product either as a stand-alone product or as a component of another product. Any use of this product other than the permitted use without the express written consent of Perseus Proteomics Inc. is prohibited.

MADE IN JAPAN

Apr 17, 2008